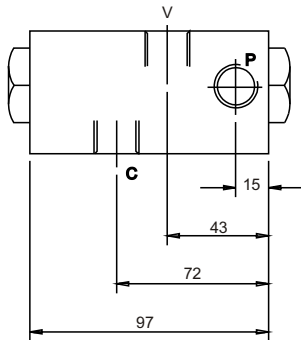


# LOCK CHECK VALVE

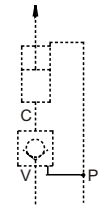
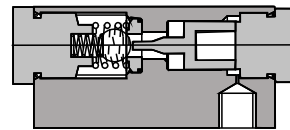
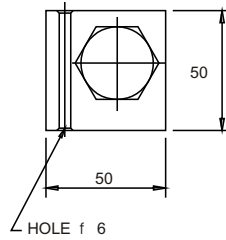
- MAX. OPERATING PRESSURE 200 BAR
- MAX FLOW 30 LPM / TEMP 80° C
- PILOT PISTON RATIO 1 : 4
- STURDY ALUMINIUM ALLOY BODY
- STEEL SEAT / BALL



## SINGLE



V - VALVE PORT  
P - PILOT PORT  
C - CYLINDER PORT

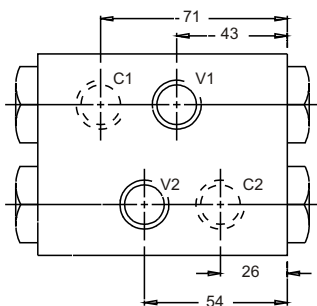


WT : - 0.7 KGS

## MODEL CODE : ASSEMBLY

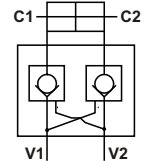
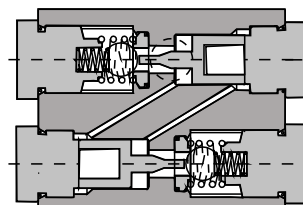
*LV T	- 03	N
SERIES	PORT	PORT
	INCH	THREAD
SLVT SINGLE	03 - 3/8"	B - BSPP (STD)
DLVT DOUBLE		N - NPT (OPTIONAL)

## DOUBLE

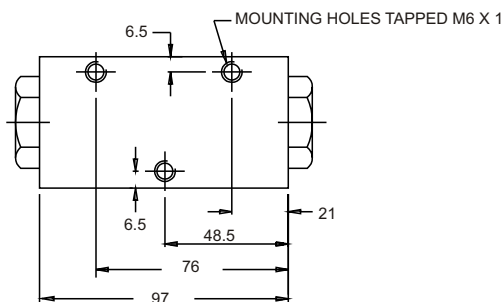


V1 / V2 - VALVE PORT

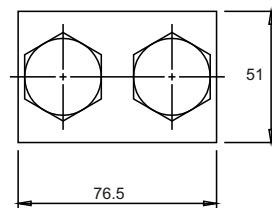
C1 / C2 - CYLINDER PORT



WT : - 1.2 KGS



MOUNTING HOLES TAPPED M6 X 1



# OPTIONAL / SPECIAL FEATURE - OMIT IF NOT REQUIRED

DIMENSIONS IN MM FOR REFERENCE ONLY