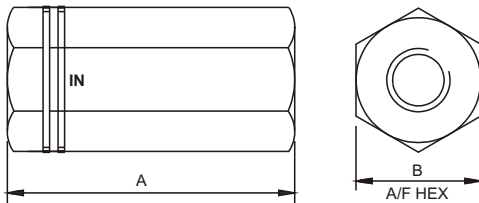
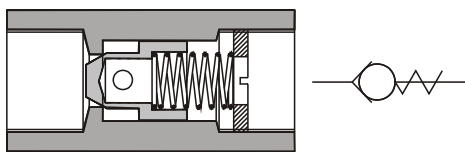


# CHECK VALVE - INLINE

- 7 SIZES - FLOWS TO 270 LPM
- MAX.WORKING PRESSURE - 200 BAR
- CHOICE OF CRACKING PRESSURE .35 / 3.5 BAR
- STEEL POPPET TYPE CONSTRUCTION
- PREVENTS FLOW IN REVERSE DIRECTION
- SUITED FOR MINERAL / PETROLEUM BASED OILS
- NOT RECOMMENDED FOR USE TO CHECK REVERSE FLOW



MODEL NO	THREADED SIZE IN. BSPP	RATED FLOW LPM	A MM	'B' A/F MM	WT KGS
CUT . 02 . 5	1/4"	20	65	19	0.15
CUT . 03 . 5	3/8"	30	75	25	0.25
CUT . 04 . 5	1/2"	50	85	30	0.40
CUT . 06 . 5	3/4"	80	100	38	0.75
CUT . 08 . 5	1"	150	115	41	0.90
CUT . 10 . 5	1 - 1/4"	200	130	55	1.75
CUT . 12 . 5	1 - 1/2"	270	132	65	2.70



## MODEL CODE

CUT	- 02B	- 05	* *
SERIES	SIZE IN BSPP	CRACKING PR.	FEATURE OPTIONAL #
CUT	02B - 1/4" BSPP	05 - 5 PSI (STD)  50 - 50 PSI	
	03B - 3/8" BSPP		
	04B - 1/2" BSPP		
	06B - 3/4" BSPP		
	08B - 1" BSPP		
	10B - 1 - 1/4" BSPP		
	12B - 1 - 1/2" BSPP		

# OPTIONAL / SPECIAL FEATURE - OMIT IF NOT REQUIRED

DIMENSIONS IN MM FOR REFERENCE ONLY