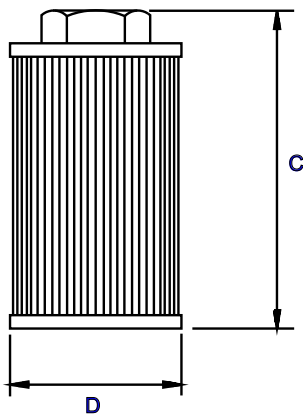
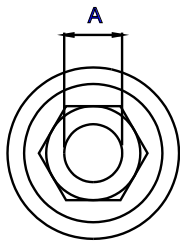
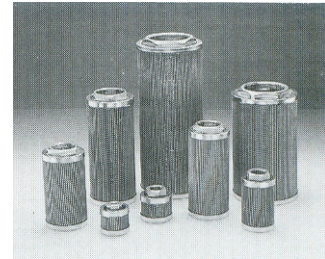


SUCTION STRAINER



- REUSABLE STAINLESS STEEL 100 MESH STANDARD
- STURDY ALL METAL STEEL CONSTRUCTION
- FILTRATION 149 MICRONS
- CONTINUOUS EPOXY BOND
- MAX. WORKING TEMP. 80° C.
- SUITABLE FOR HYDRAULIC / MINERAL OIL



MODEL NO	FLOW LPM	THREAD IN. BSPP A	TOTAL HT C	CAP DIA D	SCREEN AREA (SQ. CMS)	WT KGS
SC 2 - 003	12	3/8	63	42	220	0.16
SC 2 - 005	20	1/2	79	66	400	0.24
SC 2 - 007	30	3/4	90	66	438	0.28
SC 2 - 010	40	1	137	66	710	0.30
SC 2 - 020	80	1 - 1/4	175	85	1045	0.34
SC 2 - 030	120	1 - 1/2	203	85	1450	0.48
SC 2 - 050	200	1 - 1/2	251	100	2195	0.58
SC 2 - 051	200	2	251	100	2195	0.68
SC 2 - 075	300	2 - 1/2	256	145	2580	0.90
SC 2 - 100	400	3	300	145	3225	1.05
SC 2 - 150	600	3	340	145	4680	1.25

MODEL CODE : ASSEMBLY

SC 2	- 0 1 0	- **	- **	- **
SERIES	SIZE	PORT THDS. OPTIONAL #	MICRONS. OPTIONAL #	FEATURE. SPECIAL #
		BSPP - STD	149 -SS 100 MESH (STD)	
		NPT - OPTIONAL	125/100/ 74 / 63 -OPTIONAL	

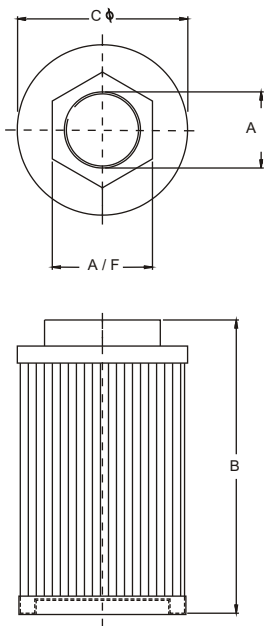
OMIT IF STANDARD

CONSULT FACTORY, FOR OPTIONAL / SPECIAL FEATURE

SUCTION STRAINER



- REUSABLE SS 100 MESH / 149 MICRON STD.
- NYLON NUT
- STEEL CAP / SUPPORT TUBE
- CONTINUOUS EPOXY BOND
- MAX. WORKING TEMP. 80° C.
- SUITABLE FOR HYDRAULIC / MINERAL OIL



MODEL NO	FLOW LPM	THREAD IN. BSPP A	OVERALL LENGTH B	DIA NUT CAP C	NUT A/F	SCREEN AREA (SQ. CMS)	WT KGS
SE - 005	20	1 / 2	79	68	25	400	0 . 2 0
SE - 007	30	3 / 4	91	68	36	438	0 . 2 0
SE - 010	40	1	137	68	41	710	0 . 30
SE - 020	80	1 - 1 / 4	175	85	50	1045	0 . 4 5
SE - 030	120	1 - 1 / 2	206	85	59	1451	0 . 5 5
SE - 050	200	1 - 1 / 2	254	102	70	2193	0 . 6 5
SE - 051	200	2	254	102	70	2193	0 . 8 0
SE - 075	300	2 - 1 / 2	259	131	85	2580	1 . 0 5
SE - 100	400	3	300	131	96	3225	1 . 3 6

MODEL CODE : ASSEMBLY

SE 3	- 0 1 0	- B	- * *	- * RB3
SERIES	SIZE	PORT THDS. OPTIONAL #	MICRONS. OPTIONAL #	BY PASS VALVE OPTIONAL #
		B - BSPP (STD) N - NPT (OPTIONAL)	149-SS 100 MESH (STD) 125 / 100 / 74 / 63 - OPTIONAL	

OMIT IF STANDARAD

CONSULT FACTORY, FOR OPTIONAL / SPECIAL FEATURE